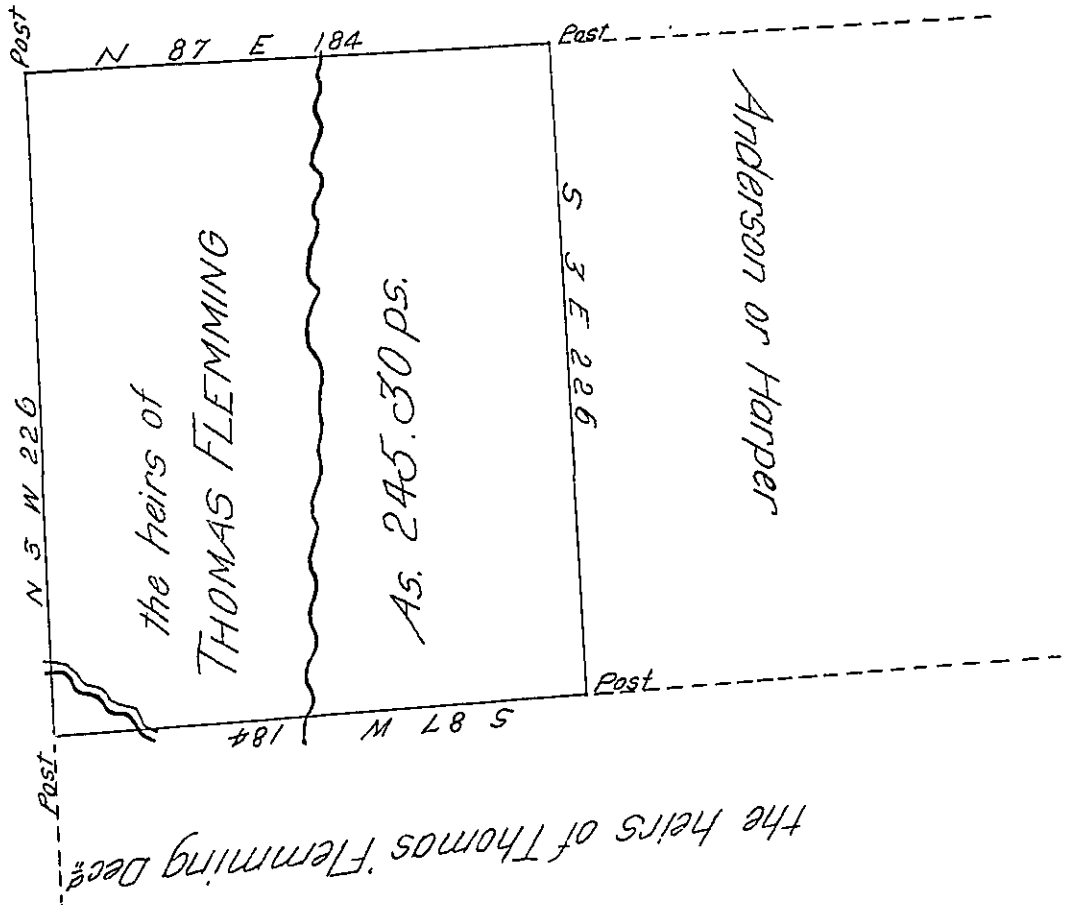


Benjamin Searver

The heirs of Thomas Flemming Decd



the heirs of Thomas Flemming Decd

Draft of a tract of land Situate in Buffalo township Butler County containing two hundred forty five Acres and thirty perches and allowance Surveyd on the 25th of March 1828 for the heirs of Thomas Flemming by Virtue of their first improvement being part of a Larger tract.

Hugh Conway D.S.

Gab! Hiester Esq S.G.

IN TESTIMONY that the above is a copy of the original remaining on file in the Department of Internal Affairs of Pennsylvania, made conformably to an Act of Assembly approved the 16th day of February, 1833, I have hereunto set my Hand and caused the Seal of said Department to be affixed at Harrisburg, this twenty eighth day of November 1904

James B. Quinn
Secretary of Internal Affairs.